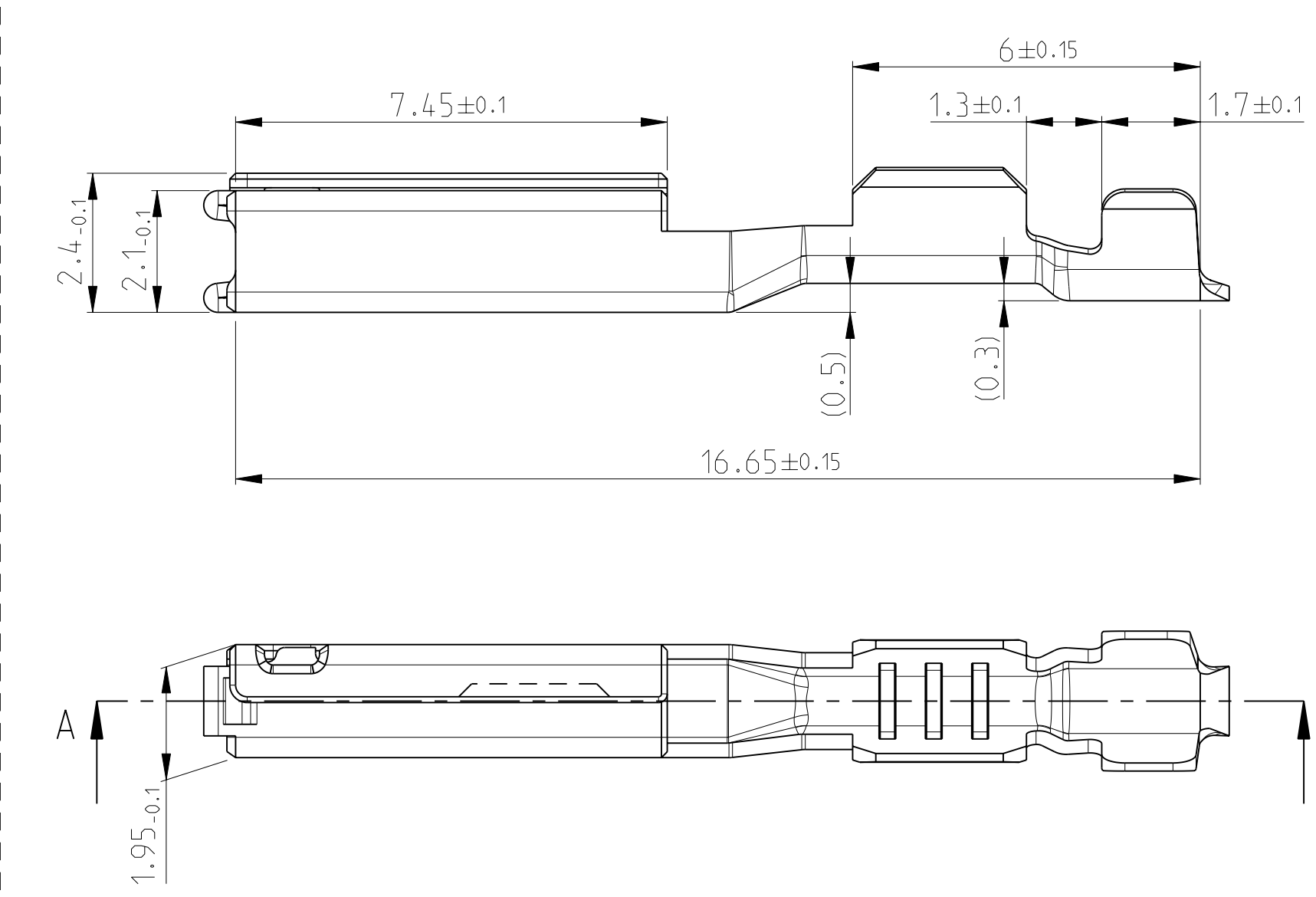
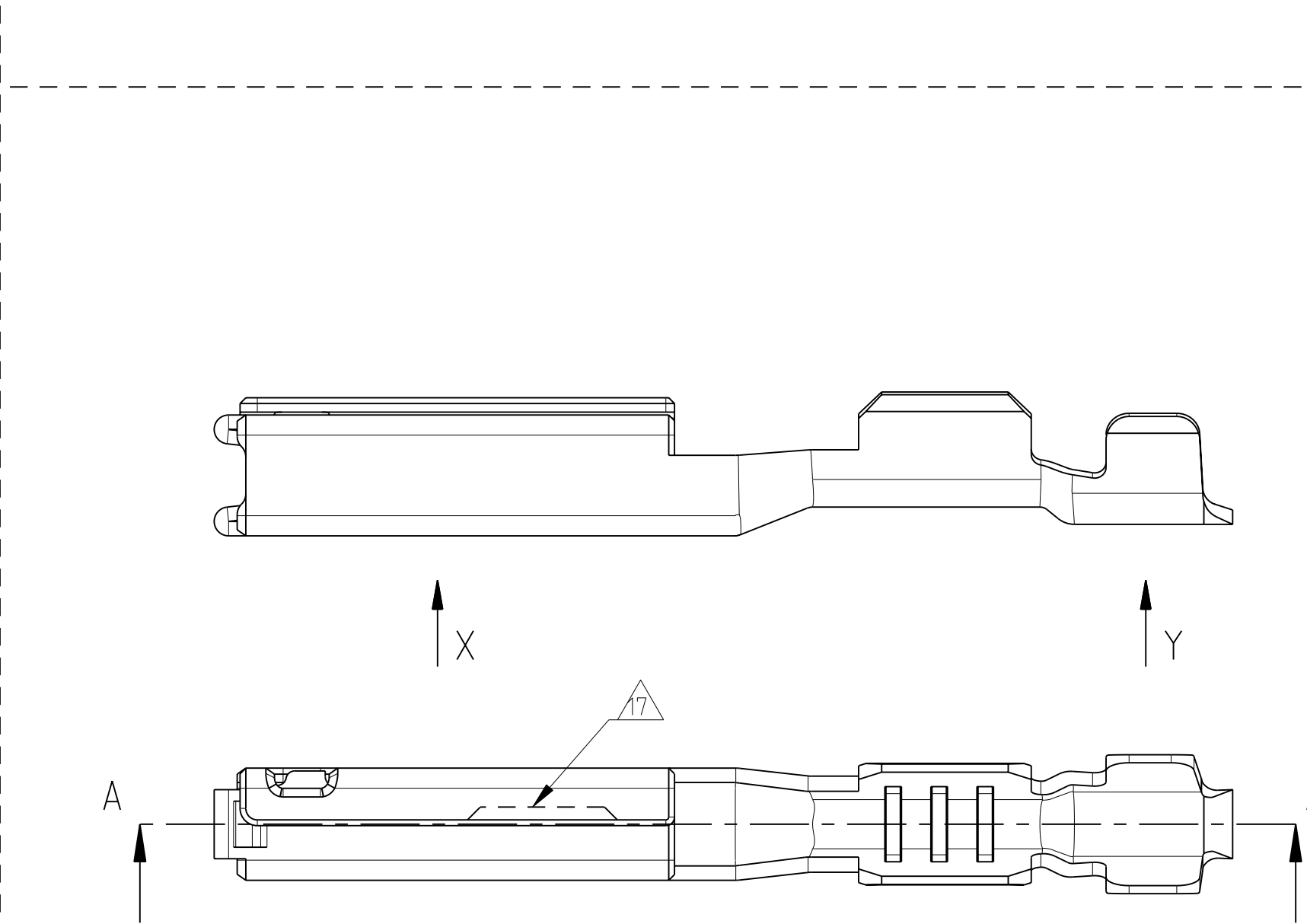


**TABLE 1: TERMINAL CRIMP & GRIP REFERENCE TABLE.**

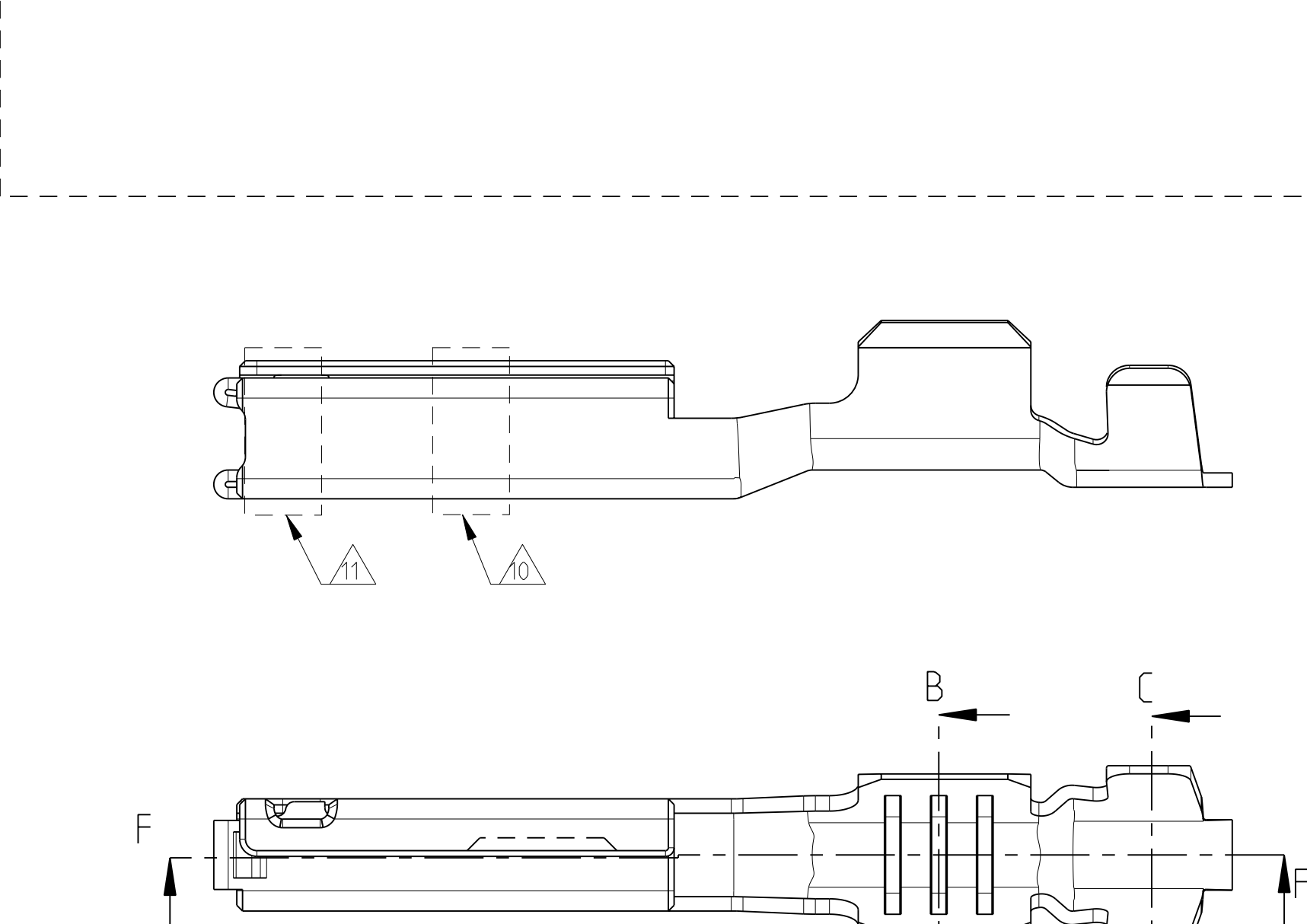
| PART NO.    | PART-REV. | PLATING SPECIFICATION        | WEIGHT | CONDUCTOR WIRE SIZE | DIMENSIONS |      |      |     | CONDUCTOR CRIMP INFO | INSULATION CRIMP INFO              | MATERIAL TYPE          |
|-------------|-----------|------------------------------|--------|---------------------|------------|------|------|-----|----------------------|------------------------------------|------------------------|
|             |           |                              |        |                     | A1         | A2   | R1   | R2  |                      |                                    |                        |
| 0-1393364-1 | A         | GOLD PLATING $\Delta_{10}$   | 0.22g  | AWG 22              | 2.11       | 2.4  | 0.45 | 0.6 | A                    | SEE TE Connectivity SPEC 114-13060 | CuNi35Si3g<br>DIN 1777 |
| 0-1393364-2 |           | GOLD PLATING $\Delta_{11}$   |        | 0.35                | 2.11       | 2.4  | 0.45 | 0.6 | A                    |                                    |                        |
| 0-1393367-2 | A         | SILVER PLATING $\Delta_{12}$ | AWG 22 | 2.11                | 2.4        | 0.45 | 0.6  | A   |                      |                                    |                        |
|             |           |                              | 0.35   | 2.11                | 2.4        | 0.45 | 0.6  | A   |                      |                                    |                        |
| 0-1393367-1 | B         | TIN PLATING                  | AWG 22 | 2.11                | 2.4        | 0.45 | 0.6  | A   |                      |                                    |                        |
|             |           |                              | 0.35   | 2.11                | 2.4        | 0.45 | 0.6  | A   |                      |                                    |                        |
| 0-1393365-1 | A         | GOLD PLATING $\Delta_{10}$   | 0.22g  | AWG 20              | 2.8        | 3.1  | 0.6  | 0.2 | B                    |                                    |                        |
|             |           |                              |        | 0.50                | 2.8        | 3.1  | 0.6  | 0.2 | B                    |                                    |                        |
| 0-1393365-2 | A         | GOLD PLATING $\Delta_{11}$   | 0.22g  | AWG 18              | 2.8        | 3.1  | 0.6  | 0.2 | B                    |                                    |                        |
|             |           |                              |        | 0.75                | 2.8        | 3.1  | 0.6  | 0.2 | B                    |                                    |                        |
| 0-1393366-2 | A         | SILVER PLATING $\Delta_{12}$ | 0.22g  | AWG 20              | 2.8        | 3.1  | 0.6  | 0.2 | B                    |                                    |                        |
|             |           |                              |        | 0.50                | 2.8        | 3.1  | 0.6  | 0.2 | B                    |                                    |                        |
|             |           |                              |        | AWG 18              | 2.8        | 3.1  | 0.6  | 0.2 | B                    |                                    |                        |
|             |           |                              |        | 0.75                | 2.8        | 3.1  | 0.6  | 0.2 | B                    |                                    |                        |
| 0-1393366-1 | B         | TIN PLATING                  | 0.22g  | AWG 20              | 2.8        | 3.1  | 0.6  | 0.2 | B                    |                                    |                        |
|             |           |                              |        | 0.50                | 2.8        | 3.1  | 0.6  | 0.2 | B                    |                                    |                        |
|             |           |                              |        | AWG 18              | 2.8        | 3.1  | 0.6  | 0.2 | B                    |                                    |                        |
|             |           |                              |        | 0.75                | 2.8        | 3.1  | 0.6  | 0.2 | B                    |                                    |                        |



TIN-VERSION



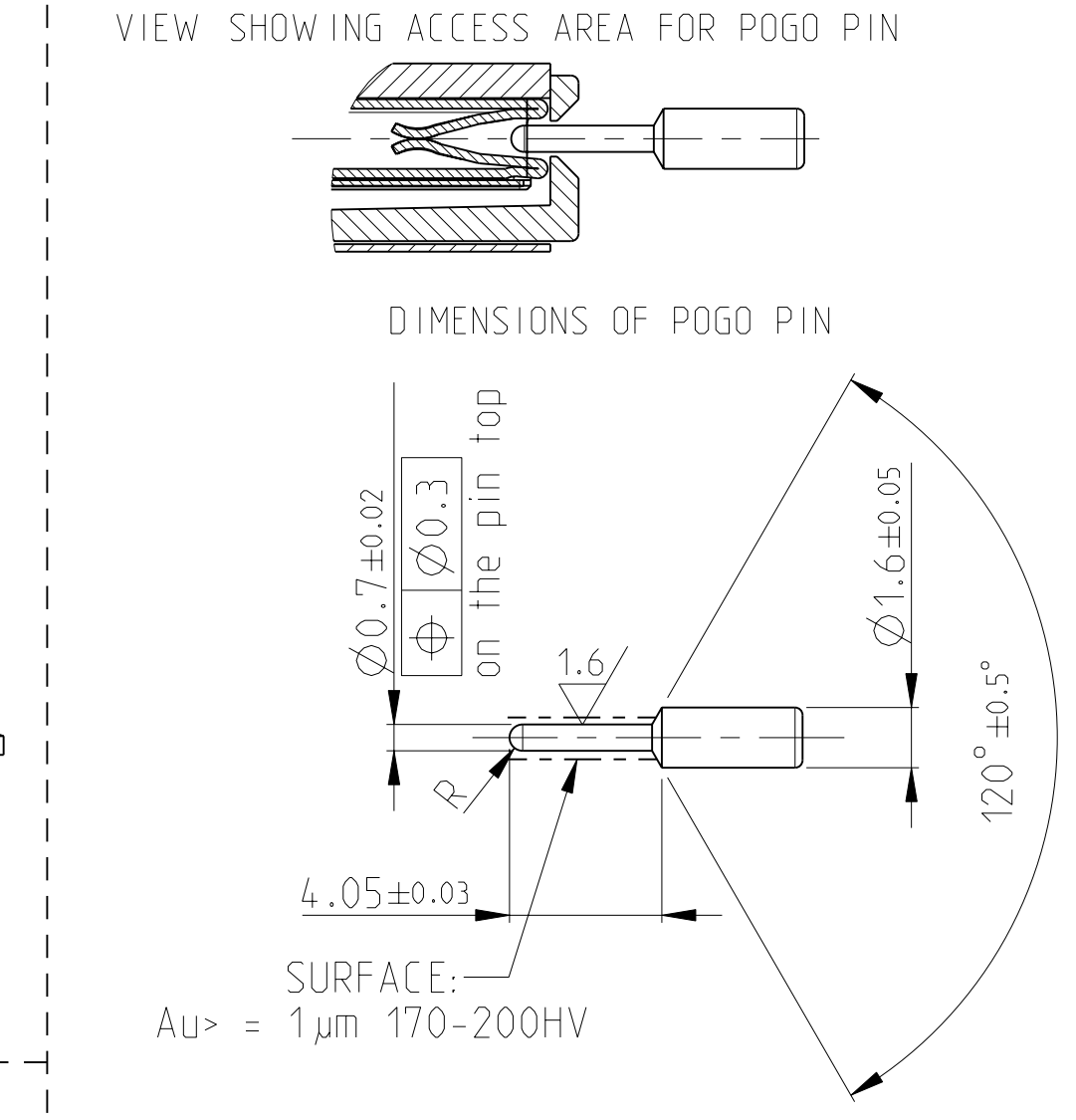
SILVER-VERSION



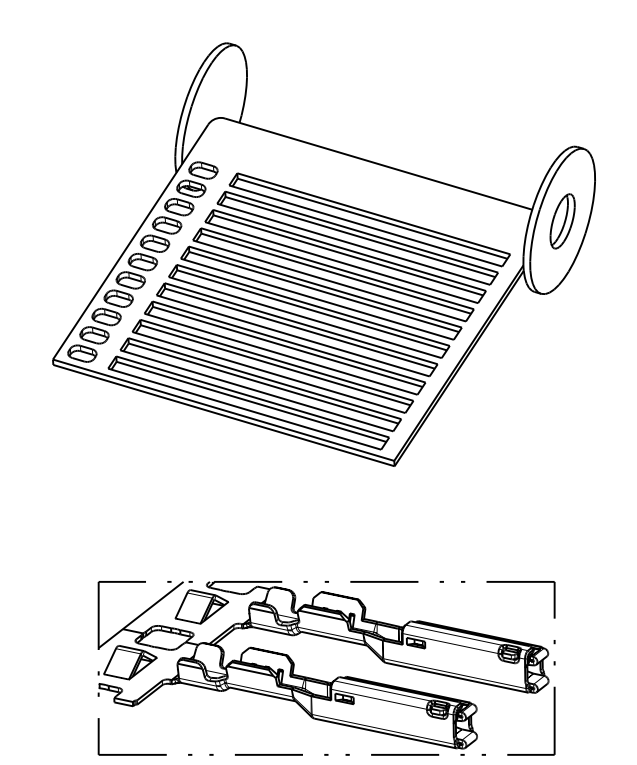
GOLD-VERSION

| LOC | DIST | REVISIONS |     |                           |           |     |      |
|-----|------|-----------|-----|---------------------------|-----------|-----|------|
| A1  | -    | P         | LTB | DESCRIPTION               | DATE      | OWN | APVD |
|     |      | B4        |     | REVISED PER ECO-11-005150 | 31MAR2011 | RK  | HMR  |
|     |      | B5        |     | SEE ECR-11-016793         | 23AUG2011 | GS  | GS   |

- NOTES:**
- MATERIAL: COPPER ALLOY. MATERIAL THICKNESS  $t=0.25\pm0.01$
  - MUST BE FREE OF CRACKS AND BURRS THAT AFFECT FUNCTIONS.
  - WHEN A TIN/GOLD PLATED TERMINAL IS USED ON THE MALE SIDE THEN THE CORRESPONDING PLATING (TIN OR GOLD) MUST BE USED ON THE FEMALE TERMINAL.
  - 
  - 0.2 mm MAX RADIUS PERMISSIBLE ON EDGES AND FILLETS SHOWN AS SHARP FOR STAMPING PARTS.
  - 
  - LUBRICATION: OPTIMOL
  - THE WIDTH OF THE TRANSITION (INDICATED AREA) MAY NOT EXCEED 2.0MM
  - TE CONNECTIVITY-CRIMP SPECIFICATION: 114-13060
  - AU FLASH STRIPE ALL ROUND TO IDENTIFICATE Au VERSION
  - GOLD PLATING ( $\approx 0.38 \mu\text{m}$  AU) FOR GOLD SHORTING BAR APPLICATIONS VALID FOR 1393364-2 AND 1393365-2 ONLY
  - SILVER PLATING  $3-5 \mu\text{m}$  (CONTACT AREA ONLY)
  - TARNISH FOR SILVER VERSION
  - SILVER FLASH
  - SILVER MARKING
  - ALTERNATE LOGO "TE" OR "1" IS ALLOWED
  - OPTIONAL NOTCH DESIGN ALLOWED
  - FOR SILVER PLATING: TARNISH IS ACCEPTABLE. ELECTRICAL PERFORMANCE IS NOT AFFECTED BY TARNISH ON ANY OF THE SILVER PLATED SURFACES OF THE TERMINAL



SPRING LOAD IN WORKING POSITION = 1.5N  
REELING DIRECTIONS FOR REFERENCE ONLY



|  |  |                       |                  |
|--|--|-----------------------|------------------|
| THIS DRAWING IS A CONTROLLED DOCUMENT. |  | OWN: B. VAN SEBROECK  | OSFEBOT          |
| DIMENSIONS: mm                         |  | CHK: G. STEINBACH     | OSFEBOT          |
| TOLERANCES UNLESS OTHERWISE SPECIFIED: |  | APVD: G. MUMMER       | OSFEBOT          |
| MATERIAL: -                            |  | FINISH: -             | -                |
| APPLICATION SPEC: 114-13060            |  | PRODUCT SPEC: -       | -                |
| WEIGHT: SEE TABLE                      |  | SIZE: A1              | CAGE CODE: 00779 |
| CUSTOMER DRAWING                       |  | DRAWING NO: C-1393364 | SHEET 1 OF 1     |
| SCALE: 10:1                            |  | REV: B5               | RESTRICTED TO: - |