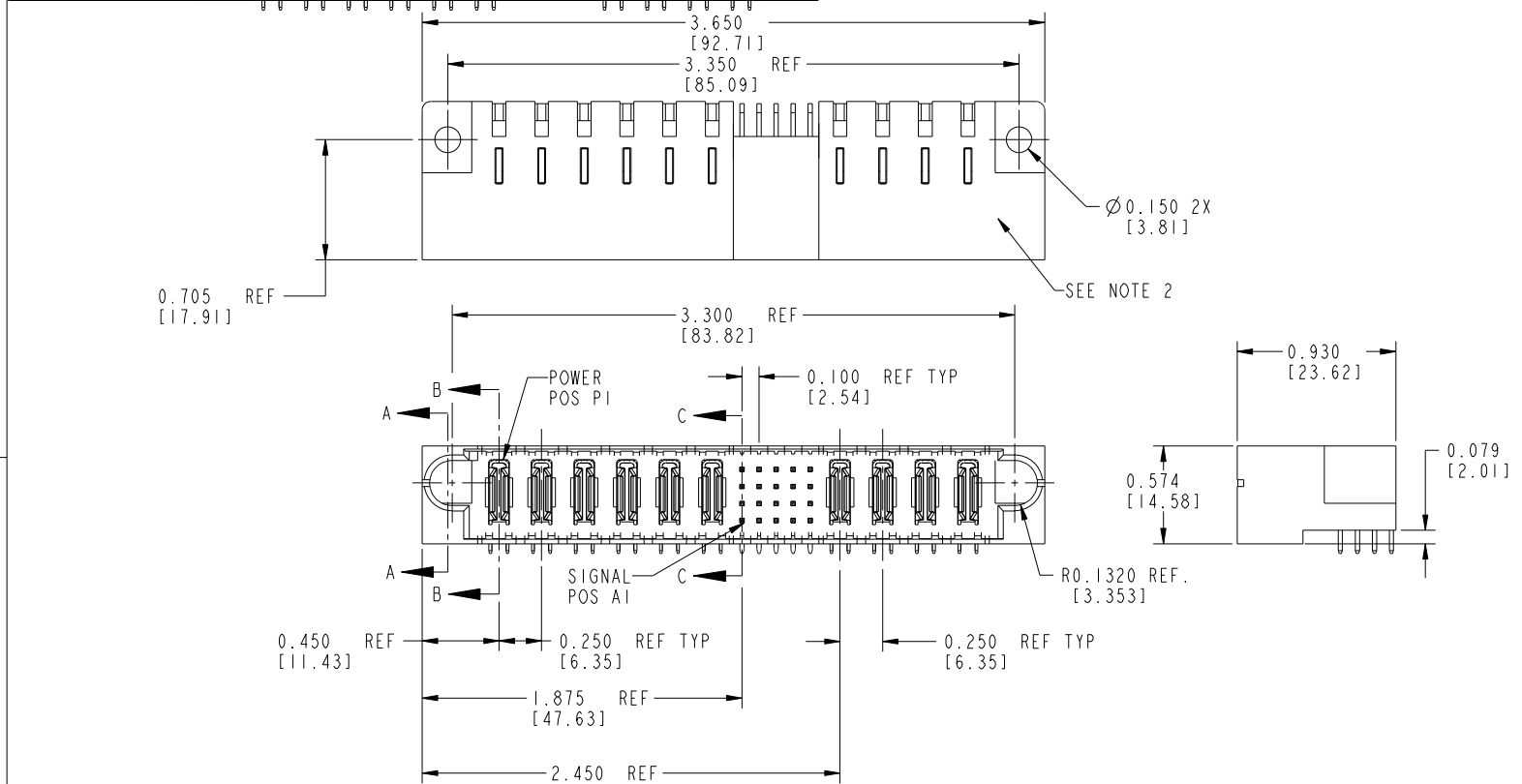
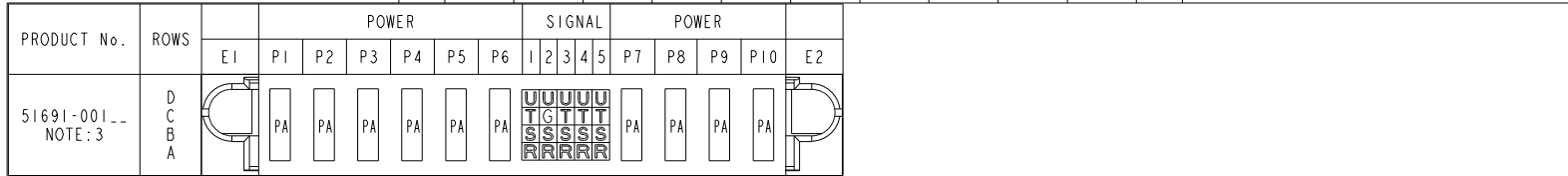


Tous droits strictement réservés. Reproduction ou communication à des tiers interdite, sous quelque forme que ce soit sans autorisation écrite du propriétaire. Propriété de c FCI. Droits de reproduction FCI.



All rights strictly reserved. Reproduction or issue to third parties in any form whatever is not permitted without written authority from the proprietor. Property of FCI. Copyright FCI.



CODE	DIM "M"	CONTACT TYPE
	MATING LENGTH	
G	0.220 [5.59]	SIGNAL
R	0.270 [6.86]	SIGNAL
S	0.270 [6.86]	SIGNAL
T	0.270 [6.86]	SIGNAL
U	0.270 [6.86]	SIGNAL
PA	N/A [N/A]	POWER

mat'l code				SEE NOTE 1		tolerances unless otherwise specified		CUSTOMER COPY		 www.fciconnect.com	
ltr	ecn no.	dr	date	linear	.XX±.01/.X±.3	projection		title		6P + 20S + 4P	
A	V02393	JRW	10-27-00	angles	.XXX±.005/.X±.13			RIGHT ANGLE SOLDER HEADER		product family PwrBlade code 213	
B	V12544	DAI	02-08-02		.XXX±.0020/.XXX±.051	INCH / MM		size		dwg no 51691 SHEET 1 OF 4	
C	DG05-0375	GuoJW	10/07/05		0°±2°	scale 1:1		A			
D	DG06-0011	CS	01/09/06	dr	E. KORFF 04-07-00						
E	DG08-0253	SH	09/13/08	enr	J. BROWN 04-07-00						
				chr	J. BROWN 04-07-00						
				appd	J. BROWN 04-07-00						
sheet index	revision sheet	E 1	E 2	E 3	E 4						

form no. 7530-001-103

PRO/E

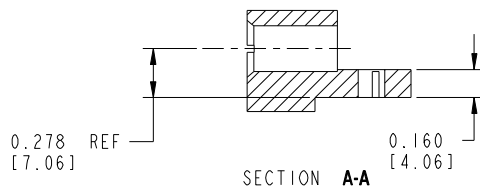
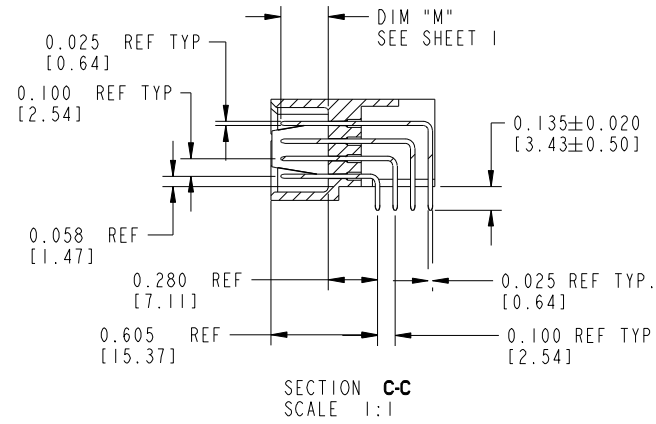
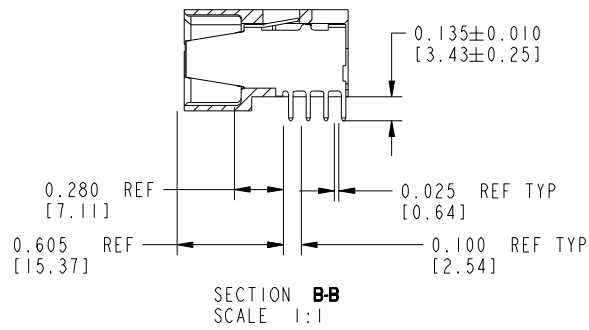
cage code 22526

Tous droits strictement réservés. Reproduction ou communication à des tiers interdite, sous quelque forme que ce soit sans autorisation écrite du propriétaire. Propriété de c FCI. Droits de reproduction FCI.



All rights strictly reserved. Reproduction or issue to third parties in any form whatever is not permitted without written authority from the proprietor. Property of FCI. Copyright FCI.

PRODUCT NUMBER
51691-001--
NOTE: 3



mat'l code		SEE NOTE 1		tolerances unless otherwise specified		CUSTOMER COPY		FCI		www.fciconnect.com		
ltr	ecr no.	dr	date	linear	.XX±.01/.X±.3	projection		title				6P + 20S + 4P
E					.XXX±.005/.X±.13			RIGHT ANGLE SOLDER HEADER				
				angles	.XXX±.0020/.XXX±.051	INCH / MM		product family		PwrBlade	code	
				dr	0°±2°	scale		A	size		dwg no	213
				enr	E. KORFF 04-07-00	1:1		51691		SHEET 2		
				chr	J. BROWN 04-07-00							
				appd	J. BROWN 04-07-00							
sheet index	revision sheet											

form no. 7530-001-103

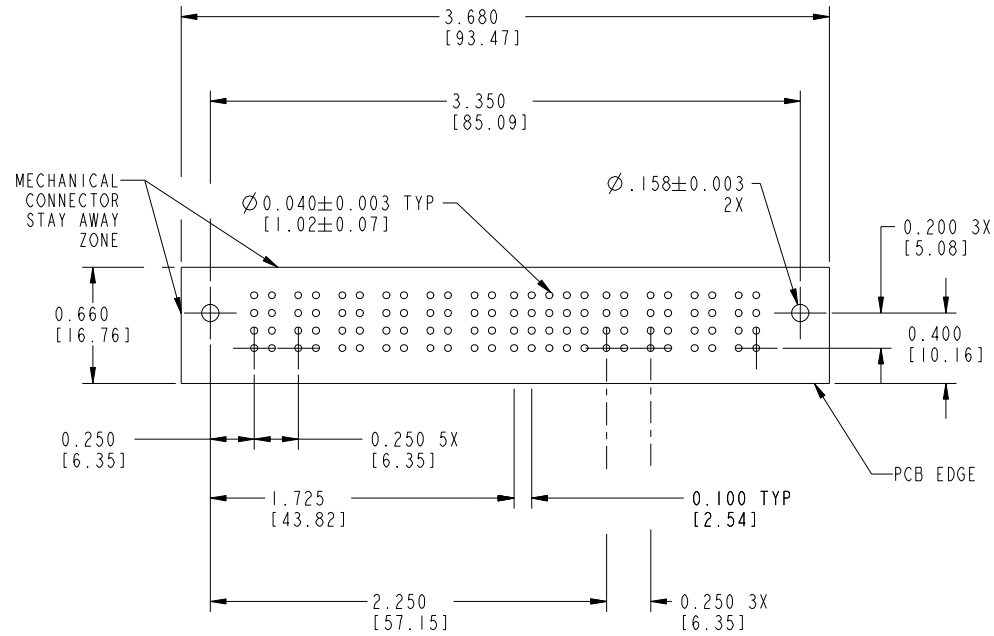
cage code 22526

Tous droits strictement réservés. Reproduction ou communication à des tiers interdite, sous quelque forme que ce soit sans autorisation écrite du propriétaire. Propriété de c FCI. Droits de reproduction FCI.



All rights strictly reserved. Reproduction or issue to third parties in any form whatever is not permitted without written authority from the proprietor. Property of FCI. Copyright FCI.

PRODUCT NUMBER
51691-001--
NOTE: 3



RECOMMENDED PCB LAYOUT

mat'l code				SEE NOTE 1		tolerances unless otherwise specified		CUSTOMER COPY		www.fciconnect.com	
ltr	ecn no.	dr	date	linear	.XX±.01/.X±.3		projection	title		6P + 20S + 4P	
E					.XXX±.005/.X±.13			RIGHT ANGLE SOLDER HEADER		product family	
				angles	.XXX±.0020/.XXX±.051			PwrBlade		213	
					0°±2°			INCH / MM		product family	
				dr	E. KORFF	04-07-00		size		213	
				enr	J. BROWN	04-07-00		dwg no		51691	
				chr	J. BROWN	04-07-00		scale		1:1	
				appd	J. BROWN	04-07-00		A		SHEET 3	
sheet index		revision sheet									

form no. 7530-001-103

cage code 22526


Tous droits strictement réservés. Reproduction ou communication à des tiers interdite sous quelque forme que ce soit sans autorisation écrite du propriétaire. Propriété de c.FCI. Droits de reproduction FCI.

PRODUCT NUMBER
51691-001--
NOTE: 3

CONNECTORS - NOTES:

- ① HOUSING MATERIAL: UL 94 V-0 GLASS FILLED HIGH TEMP THERMOPLASTIC, FLAME RETARDANT PER UL94 V-0
SIGNAL PIN MATERIAL: PHOS. BRONZE
POWER CONTACT MATERIAL: COPPER ALLOY
- ② MANUFACTURER'S NAME, P/N, AND DATE CODE TO APPEAR ON THIS SURFACE
3. PRODUCT SPECIFICATION GS-12-149.

PCB - NOTES

4. ALL DIMENSIONS ARE BASIC UNLESS OTHERWISE SPECIFIED.
5. ALL THROUGH HOLES ARE LOCATED WITH A TRUE POSITION OF .004
6. ALL HOLE DIAMETERS ARE FINISHED HOLE SIZE
7. \varnothing .158 THROUGH HOLES ARE UNPLATED
8. \varnothing .0453/1.151 DRILLED HOLES
PLATED WITH .0003/.007 MIN SnPb
OVER .001/1.03 to .003/.08 Cu PLATING TO ACHIEVE
A .040±.003/1.02±.08 HOLE
9. SEE ITEM X1 & X2 IN PRINT 10064183 FOR PLATING SPEC OF 51569-001 AND 51569-001LF RESPECTIVELY
10. A  SYMBOL WILL BE NEXT TO ANY DIMENSION, VIEW, OR NOTE WHICH HAS BEEN MODIFIED WITH CURRENT DRAWING VERSION.



All rights strictly reserved. Reproduction or issue to third parties in any form whatever is not permitted without written authority from the proprietor. Property of FCI. Copyright FCI.

mat'l code		SEE NOTE 1		tolerances unless otherwise specified		CUSTOMER		FCI		www.fciconnect.com	
ltr	ecn no.	dr	date	linear	.XX±.01/.X±.3		COPY		title 6P + 20S + 4P RIGHT ANGLE SOLDER HEADER		
E					.XXX±.005/.X±.13		projection				
				angles	.XXX±.0020/.XXX±.051		INCH / MM		product family		code
					0°±2°				PwrBlade		213
				dr	E. KORFF	04-07-00	scale		size		sheet
				enr	J. BROWN	04-07-00	1:1		dwg no		4
				chr	J. BROWN	04-07-00	A		51691		
				appd	J. BROWN	04-07-00					
sheet index	revision sheet										

form no. 7530-001-103

cage code 22526